



City of Mount Dora
510 North Baker Street
Mount Dora, Florida 32757
352-735-7126

Mount Dora City Council
Mount Dora City Hall Board Room
510 North Baker Street, Mount Dora, Florida 32757
December 23, 2024, 6:00 PM

AGENDA

CALL TO ORDER

ROLL CALL

MOMENT OF SILENCE & PLEDGE OF ALLEGIANCE

ACTION ITEM

1. Request Approval of Task Authorization with Cathcart Construction Company-Florida, LLC for the Donnelly Street Asphalt Trail-Temporary Sidewalk

ADJOURNMENT

PURSUANT TO SECTION 286.0105, FLORIDA STATUTES, IF ANY PERSON DECIDES TO APPEAL ANY DECISION MADE AT THIS MEETING WITH RESPECT TO ANY MATTER CONSIDERED AT ANY MEETING OR HEARING, SUCH PERSON MAY NEED A RECORD OF THESE PROCEEDINGS FOR SUCH PURPOSE, A PERSON MAY NEED TO ENSURE THAT A VERBATIM RECORD OF THE PROCEEDINGS IS MADE WHICH RECORD INCLUDES THE TESTIMONY AND EVIDENCE UPON WHICH THE APPEAL IS TO BE BASED. VERBATIM RECORD WILL NOT BE PROVIDED BY THE CITY OF MOUNT DORA.

NOTICE: IN ACCORDANCE WITH THE AMERICANS WITH DISABILITIES ACT OF 1990, PERSONS NEEDING A SPECIAL ACCOMMODATION TO PARTICIPATE IN THIS PROCEEDING SHOULD CONTACT THE CITY CLERK AT LEAST 48 HOURS PRIOR TO THE PROCEEDINGS. TELEPHONE (352) 735-7126 FOR ASSISTANCE. IF HEARING IMPAIRED, TELEPHONE THE FLORIDA RELAY SERVICE NUMBERS, (800) 955-8771 (TDD) OR (800) 955-8770 (VOICE) FOR ASSISTANCE.



510 N. Baker St.
Mount Dora, FL 32757
352-735-7126

DATE: December 23, 2024

TO: Honorable Mayor and City Council Members

FROM: Vince Sandersfeld, City Manager

SUBJECT: Request Approval of Task Authorization with Cathcart Construction Company-Florida, LLC for Construction of a Temporary Sidewalk on N. Donnelly Street from Limit Avenue north to the Mount Dora Welcome Monuments

Introduction:

This is a request for Council to approve a task authorization with Cathcart Construction Company-Florida, LLC for construction of a temporary sidewalk on N. Donnelly Street from Limit Avenue north to the Mount Dora welcome monuments.

Discussion:

At the direction of City Council, the attached Task Authorization is a construction proposal to install a temporary pedestrian walkway on the eastern side of Donnelly Street due to the boardwalk collapsing in July 2024. The attached proposal for a 5-foot wide (where feasible) by 5-inch thick asphalt pedestrian walkway. The basic improvement includes pedestrian markers every 10 linear feet along the trail, a crosswalk with curb cut on the western side of Donnelly Street, solar-powered crosswalk signs, 4-foot high chain link fencing, drainage pipe for ditch crossing and some asphalt curbing to funnel water to existing outfall pipes. The work is planned to begin the first week of January 2025 and is estimated to take a full two weeks to complete. Maintenance of traffic operations will be conducted on Donnelly Street during the construction.

Budget Impact:

The project cost: \$240,780.76, will be paid out of GL#445-5555-580.63-01-SW1901.

Strategic Impact:

Objective 1.2. Enhance mobility, connectivity
GOAL 2: Infrastructure / Public Safety
Objective 2.2. Enhance pedestrian safety-crosswalk
Objective 2.4. Sustain City Infrastructure

Recommendation:

Council to approve a task authorization with Cathcart Construction Company-Florida, LLC for construction of a temporary sidewalk on N. Donnelly Street from Limit Avenue north to the Mount Dora welcome monuments.

Attachment(s):

1. TA_CathcartTemporarySidewalkDonnelly_signed

Prepared by:	Jeanann Hand, City Clerk	
Reviewed by:	GEORGE MAREK, Public Works Director	Approved - 12/19/2024
	Matthew Dodson, Budget Officer	Approved - 12/19/2024
	Rita Meade, Finance Director	Approved - 12/19/2024
	City Attorney, City Attorney	Approved - 12/19/2024
	Jeanann Hand, City Clerk	Approved - 12/19/2024
	Vince Sandersfeld, City Manager	Final Approval - 12/19/2024

**CITY OF MOUNT DORA
TASK AUTHORIZATION FORM**

In accordance with the terms and conditions of the Agreement between Cathcart Construction Company – Florida, LLC (Contractor) and the City of Mount Dora, approved under piggyback Agreement, dated July 2, 2024, the parties hereto agree to the scope of work, pricing, schedule and subcontractors set forth herein.

Project Name: Temporary Sidewalk Construction – Donnelly Street from Limit Avenue to City Welcome Monuments
Project Amount: \$240,780.76
Budget Account Number: 445-5555-580.63-01-SW1901
City Project Manager: Johnny Reynolds
Contractor: Cathcart Construction Company – Florida, LLC
Contractor Project Manager: Ramon Jorge

NOTE: THE CONTRACTOR MAY NOT BEGIN WORK UNTIL THIS FULLY SIGNED TASK AUTHORIZATION AND A CITY PURCHASE ORDER ARE DELIVERD TO THE CONTRACTOR.



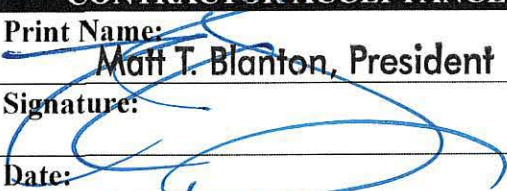
SUMMARY OF WORK TO BE COMPLETED	
<i><u>Each Task Authorization package shall include:</u></i>	
Exhibit A – Scope of Work Exhibit B – Sub-Contractors Exhibit C – Schedule Exhibit D – Compensation	
Recommended By:	
Print: <u>George Marek</u>	Date: <u>December 19, 2024</u>
Signature: <u></u>	
Reviewed By:	
Print: <u>Johnny Reynolds</u>	Date: <u>December 19, 2024</u>
Signature: <u></u>	
CONTRACTOR ACCEPTANCE	
Print Name: <u>Matt T. Blanton, President</u>	Print Name:
Signature: <u></u>	Signature:
Date: <u>12.19.24</u>	Date:
CITY APPROVAL	
Print Name:	Print Name:
Signature:	Signature:
Date:	Date:

Exhibit A – Scope of Work

Construct a temporary pedestrian walkway on the east side of N. Donnelly Street from the end of existing sidewalk located just north of Limit Avenue and running northward to end near the “Welcome to Mount Dora” monuments. The project will include an enhanced pedestrian crosswalk at the north end near the welcome monuments, pedestrian protective measures for the length of the sidewalk, signs, striping, and miscellaneous drainage features as noted in the cost schedule included in Exhibit “D” – Compensation and further described below.

The 5-foot wide by 5-inch thick asphalt pedestrian walkway includes: pedestrian delineators every 10 LF along the walkway, a crosswalk with curb cut on the west side of Donnelly Street, solar powered crosswalk signs, 4-foot high chain link fencing, 15-inch diameter RCP with 2 mitered end sections for ditch crossings and some asphalt curbing to funnel water to existing outfall pipes.

Exhibit B – Sub-Contractors

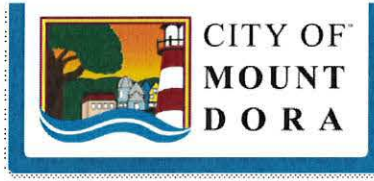
None

Exhibit C – Schedule

Project construction is planned to begin the first week of January 2025 and expected to be complete within two weeks of commencement.

Exhibit D – Compensation

Compensation is as described in the cost schedule that begins on the next page.



**CITYWIDE INFRASTRUCTURE
POTABLE, SANITARY, RECLAIMED, AND STORMWATER WITH
SITE RESTORATION**

MOUNT DORA Donnelly St Asphalt Trail					
Pay Item No.	Descriptions	Unit	Qty	Maximum Unit Price	Extended Price
1.00 Mobilization, Traffic Control and Project Documentation					
1.01	Mobilization / Demobilization (Not to Exceed 12% of Contract Value)	%	1	\$ 20,937.00	\$ 20,937.00
1.02	Maintenance of Traffic (Not to Exceed 5% of contract Value)	%	1	\$ 10,467.00	\$ 10,467.00
1.03	Arrow Board / Advance Warning Flashing	ED		\$ 25.00	\$ -
1.04	Portable Changeable Message Sign	ED	42	\$ 55.00	\$ 2,310.00
1.05	Pre Construction Video of Work Area	EA	1	\$ 2,250.00	\$ 2,250.00
1.06	Utility System Record Drawings	EA/1000 LF		\$ 1,750.00	\$ -
1.07	FDEP Partial Clearance Testing/Certification Potable Water System	EA		\$ 2,500.00	\$ -
1.08	FDEP Partial Clearance Testing/Certification Sanitary System	EA		\$ 1,750.00	\$ -
1.09	FDEP Final Clearance Testing/Certification Potable Water System	EA		\$ 3,000.00	\$ -
1.10	FDEP Final Clearance Testing/Certification Sanitary System	EA		\$ 1,750.00	\$ -
				Subtotal	\$ 35,964.00
2.00 General Site Work and Site Protection					
2.01	Sediment Barrier (Silt Fence)	LF		\$ 3.00	\$ -
2.02	Inlet Protection System	EA		\$ 350.00	\$ -
2.03	Clearing and Grubbing Within the ROW	SY	860	\$ 18.00	\$ 15,480.00
2.04	Removal of Existing Structure	SF		\$ 150.00	\$ -
2.05	Removal of Existing Concrete Pavement - Sidewalks & Driveways	SY		\$ 15.00	\$ -
2.06	Regular Excavation	CY	225	\$ 16.35	\$ 3,678.75
2.07	Borrow Excavation, Truck Measure	CY		\$ 35.00	\$ -
2.08	Embankment	CY		\$ 30.00	\$ -
2.09	Flowable Fill - Excavatable Type	CY		\$ 450.00	\$ -
2.10	Excavation for Structures	CY		\$ 25.00	\$ -
				Subtotal	\$ 19,158.75
3.00 Water Main Potable/Reclaimed (Including fittings, pipe, materials and restoration)					
3.01	Utility Pipe, F&I, Water Potable/Reclaimed, 2" PVC DR18	LF		\$ 25.00	\$ -
3.02	Utility Pipe, F&I, Water Potable/Reclaimed, 4" PVC DR18	LF		\$ 40.00	\$ -
3.03	Utility Pipe, F&I, Water Potable/Reclaimed, 6" PVC DR18	LF		\$ 65.00	\$ -
3.04	Utility Pipe, F&I, Water Potable/Reclaimed, 8" PVC DR18	80		\$ 90.00	\$ -
3.05	Utility Pipe, F&I, Water Potable/Reclaimed, 10" PVC DR18	LF		\$ 100.00	\$ -
3.06	Utility Pipe, F&I, Water Potable/Reclaimed, 12" PVC DR18	LF		\$ 150.00	\$ -
3.07	Utility Pipe, F&I, Water Potable/Reclaimed, 16" PVC DR18	LF		\$ 180.00	\$ -
3.08	Utility Pipe, F&I, Water Potable/Reclaimed 4" Directional Drill HDD/HDPE	LF		\$ 95.00	\$ -
3.09	Utility Pipe, F&I, Water Potable/Reclaimed 6" Directional Drill HDD/HDPE	LF		\$ 100.00	\$ -
3.10	Utility Pipe, F&I, Water Potable/Reclaimed 8" Directional Drill HDD/HDPE	LF		\$ 120.00	\$ -
3.11	Utility Pipe, F&I, Water Potable/Reclaimed 10" Directional Drill HDD/HDPE	LF		\$ 140.00	\$ -
3.12	Utility Pipe, F&I, Water Potable/Reclaimed 12" Directional Drill HDD/HDPE	LF		\$ 170.00	\$ -
3.13	Utility Pipe, Water Potable/Reclaimed, Remove/Dispose, Galv. 0"-2.5"	LF		\$ 20.00	\$ -
3.14	Utility Pipe, Water Potable/Reclaimed, Remove/Dispose, 2"	LF		\$ 20.00	\$ -
3.15	Utility Pipe, Water Potable/Reclaimed, Remove/Dispose, 4"	LF		\$ 16.00	\$ -
3.16	Utility Pipe, Water Potable/Reclaimed, Remove/Dispose, 6"	LF		\$ 30.00	\$ -
3.17	Utility Pipe, Water Potable/Reclaimed, Remove/Dispose, 8"	LF		\$ 18.00	\$ -
3.18	Utility Pipe, Water Potable/Reclaimed, Remove/Dispose, 10"	LF		\$ 40.00	\$ -
3.19	Utility Pipe, Water Potable/Reclaimed, Remove/Dispose, 12"	LF		\$ 40.00	\$ -
3.20	Utility Pipe, Water Potable/Reclaimed, Remove/Dispose, 16"	LF		\$ 50.00	\$ -
3.21	Utility Pipe, Water Potable/Reclaimed, Plug & Out of Service, 0"-1.9"	LF		\$ 15.00	\$ -
3.22	Utility Pipe, Water Potable/Reclaimed, Plug & Out of Service, 2"	LF		\$ 15.00	\$ -

3.23	Utility Pipe, Water Potable/Reclaimed, Plug & Out of Service, 4"	LF	\$	15.00	\$	-
3.24	Utility Pipe, Water Potable/Reclaimed, Plug & Out of Service, 6"	LF	\$	25.00	\$	-
3.25	Utility Pipe, Water Potable/Reclaimed, Plug & Out of Service, 8"	LF	\$	25.00	\$	-
3.26	Utility Pipe, Water Potable/Reclaimed, Plug & Out of Service, 10"	LF	\$	25.00	\$	-
3.27	Utility Pipe, Water Potable/Reclaimed, Plug & Out of Service, 12"	LF	\$	25.00	\$	-
3.28	Utility Pipe, Water Potable/Reclaimed, Plug & Out of Service, 16"	LF	\$	35.00	\$	-
3.29	Utility Pipe, Elbow Potable/Reclaimed, 45 or 90, F&I, 2"	EA	\$	150.00	\$	-
3.30	Utility Pipe, Elbow Potable/Reclaimed, 45 or 90, F&I, 4"	EA	\$	400.00	\$	-
3.31	Utility Pipe, Elbow Potable/Reclaimed, 45 or 90, F&I, 6"	EA	\$	500.00	\$	-
3.32	Utility Pipe, Elbow Potable/Reclaimed, 45 or 90, F&I, 8"	EA	\$	800.00	\$	-
3.33	Utility Pipe, Elbow Potable/Reclaimed, 45 or 90, F&I, 10"	EA	\$	1,200.00	\$	-
3.34	Utility Pipe, Elbow Potable/Reclaimed, 45 or 90, F&I, 12"	EA	\$	1,400.00	\$	-
3.35	Utility Pipe, Elbow Potable/Reclaimed, 45 or 90, F&I, 16"	EA	\$	3,400.00	\$	-
3.36	Utility Pipe, Existing Valve Box Adjust to Grade with Concrete Collar	EA	\$	450.00	\$	-
					Subtotal	\$ -

5.00 Utility - Water Services (Including fittings, pipe, materials and restoration)

5.01	Utility Fixture, F&I, Water, Meter and Meter Box on 0"-1.9" WM	EA	\$	850.00	\$	-
5.02	Utility Fixture, F&I, Water, Backflow Assembly on 0"-1.9" WM	EA	\$	1,100.00	\$	-
5.03	Utility Fixture, F&I, Water, Saddle on 0"-1.9" WM	EA	\$	200.00	\$	-
5.04	Utility Fixture, F&I, Water, Gate Valve Assembly on 0"-1.9" WM	EA	\$	500.00	\$	-
5.05	Utility Fixture, F&I, Water, Meter and Meter Box on 2" WM	EA	\$	900.00	\$	-
5.06	Utility Fixture, F&I, Water, Saddle on 2" WM	EA	\$	250.00	\$	-
5.07	Utility Fixture, F&I, Water, Gate Valve Assembly on 2" WM	EA	\$	800.00	\$	-
5.08	Utility Fixture, F&I, Water, Line Stop Assembly on 2" WM	EA	\$	4,000.00	\$	-
5.09	Utility Fixture, F&I, Water, Mech Joint Restraint on 2" WM	EA	\$	100.00	\$	-
5.10	Utility Fixture, F&I, Water, Meter and Meter Box on 4" WM	EA	\$	1,500.00	\$	-
5.11	Utility Fixture, F&I, Water, Saddle on 4" WM	EA	\$	750.00	\$	-
5.12	Utility Fixture, F&I, Water, Gate Valve Assembly on 4" WM	EA	\$	2,000.00	\$	-
5.13	Utility Fixture, F&I, Water, Line Stop Assembly on 4" WM	EA	\$	6,000.00	\$	-
5.14	Utility Fixture, F&I, Water, Mech Joint Restraint on 4" WM	EA	\$	250.00	\$	-
5.15	Utility Fixture, F&I, Water, Meter and Meter Box on 6" WM	EA	\$	1,500.00	\$	-
5.16	Utility Fixture, F&I, Water, Saddle on 6" WM	EA	\$	750.00	\$	-
5.17	Utility Fixture, F&I, Water, Gate Valve Assembly on 6" WM	EA	\$	2,400.00	\$	-
5.18	Utility Fixture, F&I, Water, Line Stop Assembly on 6" WM	EA	\$	7,000.00	\$	-
5.19	Utility Fixture, F&I, Water, Mech Joint Restraint on 6" WM	EA	\$	350.00	\$	-
5.20	Utility Fixture, F&I, Water, Meter and Meter Box on 8" WM	EA	\$	1,500.00	\$	-
5.21	Utility Fixture, F&I, Water, Saddle on 8" WM	EA	\$	850.00	\$	-
5.22	Utility Fixture, F&I, Water, Gate Valve Assembly on 8" WM	EA	\$	3,300.00	\$	-
5.23	Utility Fixture, F&I, Water, Line Stop Assembly on 8" WM	EA	\$	9,000.00	\$	-
5.24	Utility Fixture, F&I, Water, Mech Joint Restraint on 8" WM	EA	\$	400.00	\$	-
5.25	Utility Fixture, F&I, Water, Meter and Meter Box on 10" WM	EA	\$	1,500.00	\$	-
5.26	Utility Fixture, F&I, Water, Saddle on 10" WM	EA	\$	950.00	\$	-
5.27	Utility Fixture, F&I, Water, Gate Valve Assembly on 10" WM	EA	\$	5,500.00	\$	-
5.28	Utility Fixture, F&I, Water, Line Stop Assembly on 10" WM	EA	\$	14,000.00	\$	-
5.29	Utility Fixture, F&I, Water, Mech Joint Restraint on 10" WM	EA	\$	500.00	\$	-
5.30	Utility Fixture, F&I, Water, Meter and Meter Box on 12" WM	EA	\$	1,500.00	\$	-
5.31	Utility Fixture, F&I, Water, Saddle on 12" WM	EA	\$	1,200.00	\$	-
5.32	Utility Fixture, F&I, Water, Gate Valve Assembly on 12" WM	EA	\$	7,000.00	\$	-
5.33	Utility Fixture, F&I, Water, Line Stop Assembly on 12" WM	EA	\$	15,000.00	\$	-
5.34	Utility Fixture, F&I, Water, Mech Joint Restraint on 12" WM	EA	\$	550.00	\$	-
5.35	Utility Fixture, F&I, Water, Meter and Meter Box on 16" WM	EA	\$	2,500.00	\$	-
5.36	Utility Fixture, F&I, Water, Saddle on 16" WM	EA	\$	1,400.00	\$	-
5.37	Utility Fixture, F&I, Water, Gate Valve Assembly on 16" WM	EA	\$	12,500.00	\$	-
5.38	Utility Fixture, F&I, Water, Line Stop Assembly on 16" WM	EA	\$	21,000.00	\$	-
5.39	Utility Fixture, F&I, Water, Mech Joint Restraint on 16" WM	EA	\$	1,200.00	\$	-
5.40	Utility Fixture, F&I, 1" Single Short Water Service on 0"-2"	EA	\$	800.00	\$	-
5.41	Utility Fixture, F&I, 1" Single Long Water Service on 0"-2"	EA	\$	2,000.00	\$	-
5.42	Utility Fixture, F&I, 1.5" Double Short Water Service on 0"-2"	EA	\$	800.00	\$	-
5.43	Utility Fixture, F&I, 1.5" Double Long Water Service on 0"-2"	EA	\$	2,000.00	\$	-
5.44	Utility Fixture, F&I, 1" Single Short Water Service on 3"	EA	\$	800.00	\$	-
5.45	Utility Fixture, F&I, 1" Single Long Water Service on 3"	EA	\$	2,000.00	\$	-
5.46	Utility Fixture, F&I, 1.5" Double Short Water Service on 3"	EA	\$	800.00	\$	-
5.47	Utility Fixture, F&I, 1.5" Double Long Water Service on 3"	EA	\$	2,000.00	\$	-
5.48	Utility Fixture, F&I, 1" Single Short Water Service on 4"	EA	\$	850.00	\$	-
5.49	Utility Fixture, F&I, 1" Single Long Water Service on 4"	EA	\$	2,050.00	\$	-
5.50	Utility Fixture, F&I, 1.5" Double Short Water Service on 4"	EA	\$	1,400.00	\$	-
5.51	Utility Fixture, F&I, 1.5" Double Long Water Service on 4"	EA	\$	2,400.00	\$	-

5.52	Utility Fixture, F&I, 1" Single Short Water Service on 6"	EA	\$	900.00	\$	-
5.53	Utility Fixture, F&I, 1" Single Long Water Service on 6"	EA	\$	2,100.00	\$	-
5.54	Utility Fixture, F&I, 1.5" Double Short Water Service on 6"	EA	\$	1,400.00	\$	-
5.55	Utility Fixture, F&I, 1.5" Double Long Water Service on 6"	EA	\$	2,400.00	\$	-
5.56	Utility Fixture, F&I, 1" Single Short Water Service on 8"	EA	\$	950.00	\$	-
5.57	Utility Fixture, F&I, 1" Single Long Water Service on 8"	EA	\$	2,200.00	\$	-
5.58	Utility Fixture, F&I, 1.5" Double Short Water Service on 8"	EA	\$	1,700.00	\$	-
5.59	Utility Fixture, F&I, 1.5" Double Long Water Service on 8"	EA	\$	2,700.00	\$	-
5.60	Utility Fixture, F&I, 1" Single Short Water Service on 10"	EA	\$	1,000.00	\$	-
5.61	Utility Fixture, F&I, 1" Single Long Water Service on 10"	EA	\$	2,300.00	\$	-
5.62	Utility Fixture, F&I, 1.5" Double Short Water Service on 10"	EA	\$	1,700.00	\$	-
5.63	Utility Fixture, F&I, 1.5" Double Long Water Service on 10"	EA	\$	2,700.00	\$	-
5.64	Utility Fixture, F&I, 1" Single Short Water Service on 12"	EA	\$	1,000.00	\$	-
5.65	Utility Fixture, F&I, 1" Single Long Water Service on 12"	EA	\$	2,300.00	\$	-
5.66	Utility Fixture, F&I, 1.5" Double Short Water Service on 12"	EA	\$	1,700.00	\$	-
5.67	Utility Fixture, F&I, 1.5" Double Long Water Service on 12"	EA	\$	2,700.00	\$	-
5.68	Utility Fixture, F&I, Single Meter Box	EA	\$	850.00	\$	-
5.69	Utility Fixture, F&I, Double Meter Box	EA	\$	1,500.00	\$	-
5.70	Utility Fixture, F&I, 2" Blow-off Assembly Complete w/Box	AS	\$	2,400.00	\$	-
5.71	Utility Fixture, Existing Meter Box Adjust to Grade	EA	\$	550.00	\$	-
				Subtotal	\$	-

6.00 Fire Hydrants

6.01	Fire Hydrant Assembly, Standard 3 Way, F&I, 6" Unit	EA	\$	8,000.00	\$	-
6.02	Fire Hydrant, Existing, Adjust & Modify	EA	\$	4,000.00	\$	-
6.03	Fire Hydrant Relocate Existing	EA	\$	4,000.00	\$	-
6.04	Fire Hydrant Remove	EA	\$	2,500.00	\$	-
6.05	FH Assembly Connection Fitting - 6" x 6" x 6" MJ Tee - FH to Main Line Only	EA	\$	1,500.00	\$	-
6.06	FH Assembly Connection Fitting - 8" x 8" x 6" MJ Tee - FH to Main Line Only	EA	\$	2,000.00	\$	-
6.07	FH Assembly Connection Fitting - 10" x 10" x 6" MJ Tee - FH to Main Line Only	EA	\$	2,500.00	\$	-
6.08	FH Assembly Connection Fitting - 12" x 12" x 6" MJ Tee - FH to Main Line Only	EA	\$	3,500.00	\$	-
6.09	FH Assembly Connection Fitting - 6" MJ 90° Elbow - FH to Main Line Only	EA	\$	350.00	\$	-
6.10	FH Assembly Connection Fitting - 8" MJ 90° Elbow - FH to Main line Only	EA	\$	450.00	\$	-
6.11	FH Assembly Connection Fitting - 10" MJ 90° Elbow - FH to Main line Only	EA	\$	650.00	\$	-
6.12	FH Assembly Connection Fitting - 12" MJ 90° Elbow - FH to Main line Only	EA	\$	750.00	\$	-
				Subtotal	\$	-

7.00 Utility - Sewer Service (Including fittings, pipe, materials and restoration)

7.01	Utility Pipe, F&I, Sewer Gravity, 6" PVC DR25 *(for Services and Laterals Only)	LF	\$	200.00	\$	-
7.02	Utility Pipe, F&I, Sewer Gravity, 8" PVC DR25	LF	\$	275.00	\$	-
7.03	Utility Pipe, F&I, Sewer Gravity, 10" PVC DR25	LF	\$	300.00	\$	-
7.04	Utility Pipe, F&I, Sewer Gravity, 12" PVC DR25	LF	\$	350.00	\$	-
7.05	Utility Pipe, F&I, Sewer Gravity, 14" PVC DR25	LF	\$	350.00	\$	-
7.06	Utility Pipe, F&I, Sewer Gravity, 16" PVC DR25	LF	\$	500.00	\$	-
7.07	Utility Pipe, F&I, Sewer Gravity, 18" PVC DR25	LF	\$	600.00	\$	-
7.08	Utility Pipe, F&I, Sewer Gravity, 20" PVC DR25	LF	\$	750.00	\$	-
7.09	Utility Pipe, F&I, Sewer Gravity, 24" PVC DR25	LF	\$	800.00	\$	-
7.10	Utility Pipe, F&I, Sewer Forcemain, 6" PVC DR18	LF	\$	55.00	\$	-
7.11	Utility Pipe, F&I, Sewer Forcemain, 8" PVC DR18	LF	\$	85.00	\$	-
7.12	Utility Pipe, F&I, Sewer Forcemain, 10" PVC DR18	LF	\$	125.00	\$	-
7.13	Utility Pipe, F&I, Sewer Forcemain, 12" PVC DR18	LF	\$	175.00	\$	-
7.14	Utility Pipe, F&I, Sewer Forcemain, 16" PVC DR18	LF	\$	250.00	\$	-
7.15	Utility Pipe, F&I, Sewer Forcemain, 8" DIP	LF	\$	175.00	\$	-
7.16	Utility Pipe, F&I, Sewer Forcemain, 10" DIP	LF	\$	210.00	\$	-
7.17	Utility Pipe, F&I, Sewer Forcemain, 12" DIP	LF	\$	240.00	\$	-
7.18	Utility Pipe, F&I, Sewer Forcemain, 16" DIP	LF	\$	300.00	\$	-
7.19	Utility Pipe, Sewer, Remove/Dispose, 6"	LF	\$	30.00	\$	-
7.20	Utility Pipe, Sewer, Remove/Dispose, 8"	LF	\$	35.00	\$	-
7.21	Utility Pipe, Sewer, Remove/Dispose, 10"	LF	\$	40.00	\$	-
7.22	Utility Pipe, Sewer, Remove/Dispose, 12"	LF	\$	40.00	\$	-
7.23	Utility Pipe, Sewer, Remove/Dispose, 16"	LF	\$	50.00	\$	-
7.24	Utility Pipe, Cure-In-Place, Sewer, Existing Clay, 6"	LF	\$	120.00	\$	-
7.25	Utility Pipe, Cure-In-Place, Sewer, Existing Clay, 8"	LF	\$	140.00	\$	-
7.26	Utility Pipe, Cure-In-Place, Sewer, Existing Clay, 10"	LF	\$	160.00	\$	-
7.27	Utility Pipe, Cure-In-Place, Sewer, Existing Clay, 12"	LF	\$	180.00	\$	-

7.28	Utility Fixture, F&I, 6" Sewer Service Fitting to 6" Gravity Main	EA	\$	600.00	\$	-	
7.29	Utility Fixture, F&I, 6" Sewer Service Fitting to 8" Gravity Main	EA	\$	750.00	\$	-	
7.30	Utility Fixture, F&I, 6" Sewer Service Fitting to 10" Gravity Main	EA	\$	750.00	\$	-	
7.31	Utility Fixture, F&I, 6" Sewer Service Fitting to 11" to 12" Gravity Main	EA	\$	850.00	\$	-	
7.32	Utility Fixture, F&I, 6" Sewer Service Fitting to 13" to 14" Gravity Main	EA	\$	850.00	\$	-	
7.33	Utility Fixture, F&I, 6" Sewer Service Fitting to 15" to 16" Gravity Main	EA	\$	1,500.00	\$	-	
7.34	Utility Fixture, F&I, 6" Sewer Service Fitting to 17" to 18" Gravity Main	EA	\$	2,000.00	\$	-	
7.35	Utility Fixture, F&I, 6" Sewer Service Fitting to 20" to 21" Gravity Main	EA	\$	2,500.00	\$	-	
7.36	Utility Fixture, F&I, 6" Sewer Service Fitting to 22" to 24" Gravity Main	EA	\$	3,000.00	\$	-	
7.37	Utility Fixture, F&I, 4" Cleanout Sewer	EA	\$	550.00	\$	-	
7.38	Utility Fixture, F&I, 6" Cleanout Sewer	EA	\$	650.00	\$	-	
7.39	Lining of Existing Sewer Manhole	EA	\$	7,000.00	\$	-	
7.40	Sewer Manhole Complete	EA	\$	12,000.00	\$	-	
7.41	Connect to Existing Sewer Manhole / TANK	EA	\$	2,500.00	\$	-	
					Subtotal	\$	-

8.00 Reclaimed Water Service (Including fittings, pipe, materials and restoration)

8.01	Utility Fixture, F&I, Reclaimed, Meter and Meter Box on 0"-1.9"	EA	\$	850.00	\$	-
8.02	Utility Fixture, F&I, Reclaimed, Backflow Assembly on 0"-1.9"	EA	\$	1,100.00	\$	-
8.03	Utility Fixture, F&I, Reclaimed, Saddle on 0"-1.9"	EA	\$	200.00	\$	-
8.04	Utility Fixture, F&I, Reclaimed, Gate Valve Assembly on 0"-1.9"	EA	\$	500.00	\$	-
8.05	Utility Fixture, F&I, Reclaimed, Meter and Meter Box on 2"	EA	\$	900.00	\$	-
8.06	Utility Fixture, F&I, Reclaimed, Backflow Assembly on 2"	EA	\$	1,100.00	\$	-
8.07	Utility Fixture, F&I, Reclaimed, Saddle on 2"	EA	\$	250.00	\$	-
8.08	Utility Fixture, F&I, Reclaimed, Gate Valve Assembly on 2"	EA	\$	800.00	\$	-
8.09	Utility Fixture, F&I, Reclaimed, Line Stop Assembly on 2"	EA	\$	4,000.00	\$	-
8.10	Utility Fixture, F&I, Reclaimed, Mech Joint Restraint on 2"	EA	\$	100.00	\$	-
8.11	Utility Fixture, F&I, Reclaimed, Meter and Meter Box on 4"	EA	\$	1,500.00	\$	-
8.12	Utility Fixture, F&I, Reclaimed, Saddle on 4"	EA	\$	750.00	\$	-
8.13	Utility Fixture, F&I, Reclaimed, Gate Valve Assembly on 4"	EA	\$	2,000.00	\$	-
8.14	Utility Fixture, F&I, Reclaimed, Line Stop Assembly on 4"	EA	\$	6,000.00	\$	-
8.15	Utility Fixture, F&I, Reclaimed, Mech Joint Restraint on 4"	EA	\$	250.00	\$	-
8.16	Utility Fixture, F&I, Reclaimed, Meter and Meter Box on 6"	EA	\$	1,500.00	\$	-
8.17	Utility Fixture, F&I, Reclaimed, Saddle on 6"	EA	\$	750.00	\$	-
8.18	Utility Fixture, F&I, Reclaimed, Gate Valve Assembly on 6"	EA	\$	2,400.00	\$	-
8.19	Utility Fixture, F&I, Reclaimed, Line Stop Assembly on 6"	EA	\$	7,000.00	\$	-
8.20	Utility Fixture, F&I, Reclaimed, Mech Joint Restraint on 6"	EA	\$	350.00	\$	-
8.21	Utility Fixture, F&I, Reclaimed, Meter and Meter Box on 8"	EA	\$	1,500.00	\$	-
8.22	Utility Fixture, F&I, Reclaimed, Saddle on 8"	EA	\$	850.00	\$	-
8.23	Utility Fixture, F&I, Reclaimed, Gate Valve Assembly on 8"	EA	\$	3,200.00	\$	-
8.24	Utility Fixture, F&I, Reclaimed, Line Stop Assembly on 8"	EA	\$	9,000.00	\$	-
8.25	Utility Fixture, F&I, Reclaimed, Mech Joint Restraint on 8"	EA	\$	400.00	\$	-
8.26	Utility Fixture, F&I, Reclaimed, Meter and Meter Box on 10"	EA	\$	1,500.00	\$	-
8.27	Utility Fixture, F&I, Reclaimed, Saddle on 10"	EA	\$	950.00	\$	-
8.28	Utility Fixture, F&I, Reclaimed, Gate Valve Assembly on 10"	EA	\$	5,500.00	\$	-
8.29	Utility Fixture, F&I, Reclaimed, Line Stop Assembly on 10"	EA	\$	14,000.00	\$	-
8.30	Utility Fixture, F&I, Reclaimed, Mech Joint Restraint on 10"	EA	\$	500.00	\$	-
8.31	Utility Fixture, F&I, Reclaimed, Meter and Meter Box on 12"	EA	\$	1,500.00	\$	-
8.32	Utility Fixture, F&I, Reclaimed, Saddle on 12"	EA	\$	1,200.00	\$	-
8.33	Utility Fixture, F&I, Reclaimed, Gate Valve Assembly on 12"	EA	\$	7,000.00	\$	-
8.34	Utility Fixture, F&I, Reclaimed, Line Stop Assembly on 12"	EA	\$	15,000.00	\$	-
8.35	Utility Fixture, F&I, Reclaimed, Mech Joint Restraint on 12"	EA	\$	550.00	\$	-
8.36	Utility Fixture, F&I, Reclaimed, Meter and Meter Box on 16"	EA	\$	2,500.00	\$	-
8.37	Utility Fixture, F&I, Reclaimed, Saddle on 16"	EA	\$	1,400.00	\$	-
8.38	Utility Fixture, F&I, Reclaimed, Gate Valve Assembly on 16"	EA	\$	12,500.00	\$	-
8.39	Utility Fixture, F&I, Reclaimed, Line Stop Assembly on 16"	EA	\$	21,000.00	\$	-
8.40	Utility Fixture, F&I, Reclaimed, Mech Joint Restraint on 16"	EA	\$	1,200.00	\$	-
8.41	Utility Fixture, F&I, 1" Single Short Reclaimed Service on 0"-2"	EA	\$	800.00	\$	-
8.42	Utility Fixture, F&I, 1" Single Long Reclaimed Service on 0"-2"	EA	\$	2,000.00	\$	-
8.43	Utility Fixture, F&I, 1.5" Double Short Reclaimed Service on 0"-2"	EA	\$	800.00	\$	-
8.44	Utility Fixture, F&I, 1.5" Double Long Reclaimed Service on 0"-2"	EA	\$	2,000.00	\$	-
8.45	Utility Fixture, F&I, 1" Single Short Reclaimed Service on 3"	EA	\$	800.00	\$	-
8.46	Utility Fixture, F&I, 1" Single Long Reclaimed Service on 3"	EA	\$	2,000.00	\$	-
8.47	Utility Fixture, F&I, 1.5" Double Short Reclaimed Service on 3"	EA	\$	1,200.00	\$	-
8.48	Utility Fixture, F&I, 1.5" Double Long Reclaimed Service on 3"	EA	\$	2,200.00	\$	-
8.49	Utility Fixture, F&I, 1" Single Short Reclaimed Service on 4"	EA	\$	850.00	\$	-
8.50	Utility Fixture, F&I, 1" Single Long Reclaimed Service on 4"	EA	\$	2,050.00	\$	-
8.51	Utility Fixture, F&I, 1.5" Double Short Reclaimed Service on 4"	EA	\$	1,400.00	\$	-

8.52	Utility Fixture, F&I, 1.5" Double Long Reclaimed Service on 4"	EA		\$	2,400.00	\$	-
8.53	Utility Fixture, F&I, 1" Single Short Reclaimed Service on 6"	EA		\$	900.00	\$	-
8.54	Utility Fixture, F&I, 1" Single Long Reclaimed Service on 6"	EA		\$	2,100.00	\$	-
8.55	Utility Fixture, F&I, 1.5" Double Short Reclaimed Service on 6"	EA		\$	1,400.00	\$	-
8.56	Utility Fixture, F&I, 1.5" Double Long Reclaimed Service on 6"	EA		\$	2,400.00	\$	-
8.57	Utility Fixture, F&I, 1" Single Short Reclaimed Service on 8"	EA		\$	950.00	\$	-
8.58	Utility Fixture, F&I, 1" Single Long Reclaimed Service on 8"	EA		\$	2,200.00	\$	-
8.59	Utility Fixture, F&I, 1.5" Double Short Reclaimed Service on 8"	EA		\$	1,700.00	\$	-
8.60	Utility Fixture, F&I, 1.5" Double Long Reclaimed Service on 8"	EA		\$	2,700.00	\$	-
8.61	Utility Fixture, F&I, 1" Single Short Reclaimed Service on 10"	EA		\$	1,000.00	\$	-
8.62	Utility Fixture, F&I, 1" Single Long Reclaimed Service on 10"	EA		\$	2,300.00	\$	-
8.63	Utility Fixture, F&I, 1.5" Double Short Reclaimed Service on 10"	EA		\$	1,700.00	\$	-
8.64	Utility Fixture, F&I, 1.5" Double Long Reclaimed Service on 10"	EA		\$	2,700.00	\$	-
8.65	Utility Fixture, F&I, 1" Single Short Reclaimed Service on 12"	EA		\$	1,000.00	\$	-
8.66	Utility Fixture, F&I, 1" Single Long Reclaimed Service on 12"	EA		\$	2,300.00	\$	-
8.67	Utility Fixture, F&I, 1.5" Double Short Reclaimed Service on 12"	EA		\$	1,700.00	\$	-
8.68	Utility Fixture, F&I, 1.5" Double Long Reclaimed Service on 12"	EA		\$	2,700.00	\$	-
8.69	Utility Fixture, F&I, 1" Single Short Reclaimed Service on 16"	EA		\$	1,400.00	\$	-
8.70	Utility Fixture, F&I, 1" Single Long Reclaimed Service on 16"	EA		\$	2,400.00	\$	-
8.71	Utility Fixture, F&I, 1.5" Double Short Reclaimed Service on 16"	EA		\$	2,200.00	\$	-
8.72	Utility Fixture, F&I, 1.5" Double Long Reclaimed Service on 16"	EA		\$	3,200.00	\$	-
8.73	Utility Fixture, Meter Relocate and Adjust Box	EA		\$	550.00	\$	-
8.74	Utility Fixture, F&I, Single Reclaimed Meter Box	EA		\$	850.00	\$	-
8.75	Utility Fixture, F&I, Double Reclaimed Meter Box	EA		\$	1,500.00	\$	-
				Subtotal	\$	\$	-

9.00 Brick Paver Features (Includes demolition, sub-base, concrete, brick, and asphalt restoration work)

9.01	Pavers Architectural Roadway, F&I, Includes Base & Joint Sand	SY		\$	150.00	\$	-
9.02	Pavers Architectural Sidewalk, F&I, Includes Base & Joint Sand	SY		\$	140.00	\$	-
9.03	Concrete Class II, Approach Slabs	CY		\$	350.00	\$	-
9.04	Clearing & Grubbing for Pavers	SY		\$	18.00	\$	-
9.05	Paver Bendable Drain Pipe 4", F&I, w/Aggregate	LF		\$	8.00	\$	-
9.06	Paver Drain Clean-out 4", F&I	EA		\$	125.00	\$	-
9.07	Steel Vehicular Plates, Temp., F&I 8' W x 20' L x 1" thick	EA		\$	1,750.00	\$	-
				Subtotal	\$	\$	-

10.00 Concrete Work

10.01	Concrete Curb & Gutter, Type F (Parent of Drop Curb)	LF		\$	55.00	\$	-
10.02	Concrete Curb & Gutter, Type A	LF		\$	45.00	\$	-
10.03	Concrete Curb & Gutter, Type B	LF		\$	45.00	\$	-
10.04	Concrete/Asphalt Curb & Gutter, Type D to Drains	LF	180	\$	50.00	\$	9,000.00
10.05	Concrete Curb & Gutter, Type E	LF		\$	50.00	\$	-
10.06	Concrete Drop Curb, FDOT	LF	10	\$	50.00	\$	500.00
10.07	Concrete Ribbon Curb 12" Width	LF		\$	45.00	\$	-
10.08	Concrete Valley Gutter	LF		\$	70.00	\$	-
10.09	Sidewalk Concrete, 4" Thick	SY		\$	65.00	\$	-
10.10	Special Sidewalk Finish - Trowel Edge Alternating Broom Fields	SY		\$	5.00	\$	-
10.11	Single Direction Detectable Warning Mat (New)	EA		\$	150.00	\$	-
10.12	Dual Direction Detectable Warning (New)Mat	EA		\$	300.00	\$	-
10.13	Sidewalk/Pavement Concrete, 6" Thick	SY	15	\$	90.00	\$	1,350.00
10.14	Driveway Apron Concrete, 6" Thick	SY		\$	90.00	\$	-
10.15	Detectable Warning Mat on Existing Walking Surface	EA	6	\$	150.00	\$	900.00
10.16	Concrete Class NS, Gravity Wall	CY		\$	600.00	\$	-
10.17	Concrete Traffic Separator, Special - Variable Width	SY		\$	130.00	\$	-
10.18	Concrete Barrier Wall, Removal	LF		\$	50.00	\$	-
10.19	Concrete Traffic Railing Barrier, with Junction Slab, 42" 'F' Shape	LF		\$	275.00	\$	-
10.20	Concrete Surface, Class V Bridge Treatment, Prep & Apply	SF		\$	4.00	\$	-
10.21	Pressure Wash Existing Curb & Gutter, Sidewalks, & Driveways	SF		\$	1.00	\$	-
				Subtotal	\$	\$	11,750.00

11.00 Pavement Restoration (Refer to Section 02010)

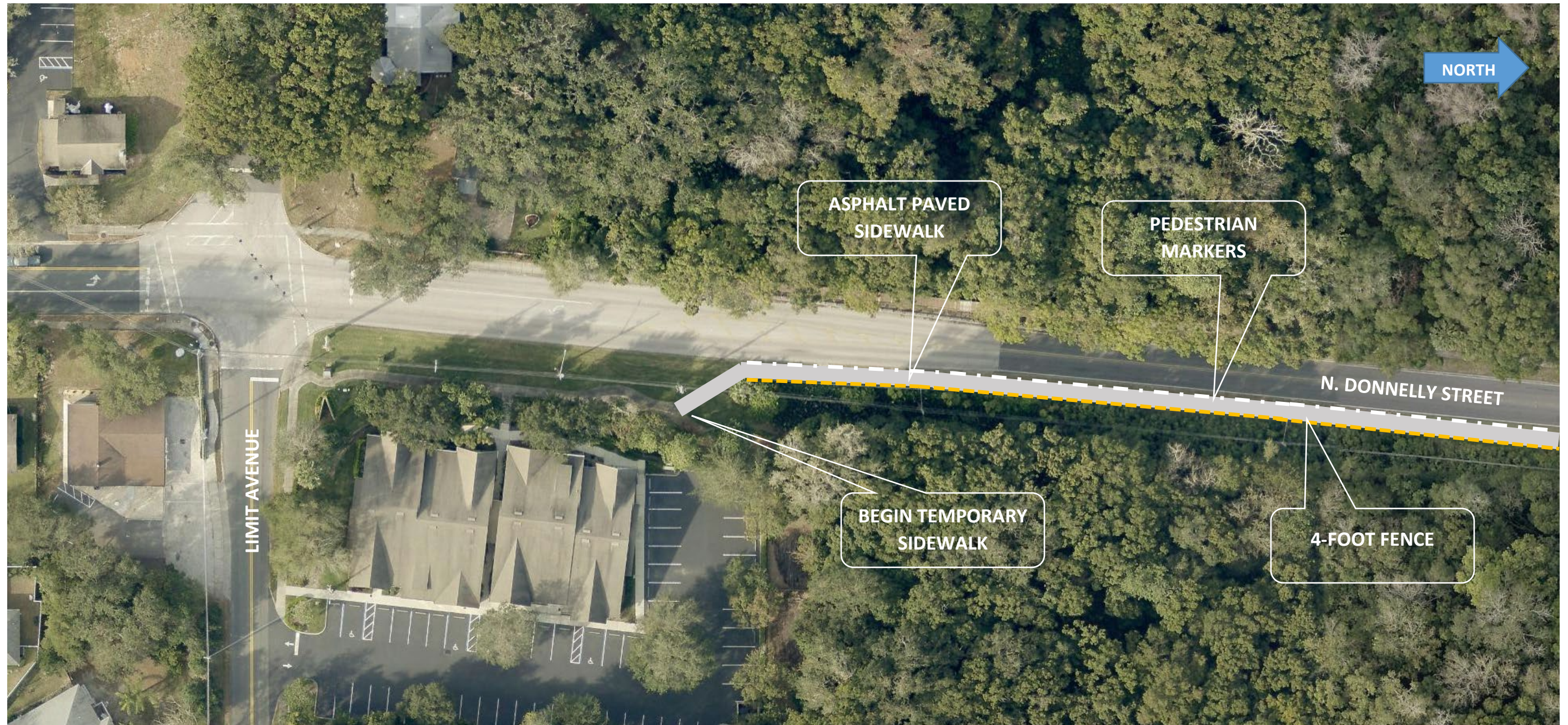
11.01	Stabilization Type B (per City Detail)	SY		\$	15.00	\$	-
11.02	Optional Base Group 06 or 8" Limerock (per City Detail)	SY		\$	65.00	\$	-
11.03	Tack and Sand Optional Base or Limerock (Per FDOT Spec)	SY		\$	1.50	\$	-
11.04	Asphalt Trail (5" Thick Trail)	SY	750	\$	112.00	\$	84,000.00
11.05	Milling Existing Asphalt Pav't. 1.25" Average Depth	SY		\$	7.00	\$	-
11.06	Milling Existing Asphalt Pav't. 1.50" Average Depth	SY		\$	8.00	\$	-

11.07	SuperPave Asphaltic Concrete, Traffic 'B' SP9.5 at 1.25" Depth	TN		\$	300.00	\$	-
11.08	SuperPave Asphaltic Concrete, Traffic 'B' SP12.5 at 1.50" Depth	TN		\$	300.00	\$	-
11.09	Reinforced Concrete Pavement 8" Depth	SY		\$	175.00	\$	-
11.10	Traffic Signal Loop Assembly, F&I Type 'F'	AS		\$	2,800.00	\$	-
11.11	Retro-Reflective Pavement Markers	EA		\$	7.00	\$	-
11.12	Thermoplastic Pavement Marking, Standard, White, Solid, 6"	LF		\$	5.00	\$	-
11.13	Thermoplastic Pavement Marking, Standard, White, Solid, 8"	LF		\$	8.00	\$	-
11.14	Thermoplastic Pavement Marking, Standard, White, Solid, 12"	LF		\$	10.00	\$	-
11.15	Thermoplastic Pavement Marking, Standard, White, Solid, 18" for Diagonals and Chevrons	LF		\$	15.00	\$	-
11.16	Thermoplastic Pavement Marking, Standard, White, Solid, 24" For 'Stop' line and Crosswalks	LF	80	\$	18.00	\$	1,440.00
11.17	Thermoplastic Pavement Marking, Standard, White, Message or Symbol	EA		\$	150.00	\$	-
11.18	Thermoplastic Pavement Marking, Standard, White, Arrows	EA		\$	125.00	\$	-
11.19	Thermoplastic Pavement Marking, Standard, Yellow, Solid, 6"	LF		\$	7.00	\$	-
11.20	Thermoplastic Pavement Marking, Standard, Yellow, Solid, 12"	LF		\$	10.00	\$	-
11.21	Thermoplastic Pavement Marking, Standard, Yellow, Solid, 18" for Diagonals and Chevrons	LF		\$	15.00	\$	-
11.22	Permanent Concrete Pavement Stripe Paint, Standard, White, 24" Width	LF		\$	18.00	\$	-
11.23	Temporary Asphalt Paint - Pre-Thermoplastic	LS		\$	1,500.00	\$	-
					Subtotal	\$	85,440.00

12.00 Stormwater Improvements and Restoration (Refer to Section 02010)

12.01	Curb Inlet Complete, F&I - Type P, 4' Diameter Round, Type 1 Top, 6' OAH	EA		\$	6,500.00	\$	-
12.02	Curb Inlet Complete, F&I - Type P, 4' Diameter Round, Type 2 Top, 6' OAH	EA		\$	6,500.00	\$	-
12.03	Curb Inlet Complete, F&I - Type J, 5' Diameter Round, Type 1 Top, 6' OAH	EA		\$	8,500.00	\$	-
12.04	Curb Inlet Complete, F&I - Type J, 5' Diameter Round, Type 2 Top, 6' OAH	EA		\$	8,500.00	\$	-
12.05	Curb Inlet Complete, F&I - Type J, 5' Diameter Round, Type 4 Top, 6' OAH	EA		\$	8,500.00	\$	-
12.06	Curb Inlet Complete, F&I - Type P, 4' Diameter Round, Type 5 Top, 6' OAH	EA		\$	6,000.00	\$	-
12.07	Curb Inlet Complete, F&I - Type P, 4' Diameter Round, Type 6 Top, 6' OAH	EA		\$	6,000.00	\$	-
12.08	Curb Inlet Complete, F&I - Type J, 5' Diameter Round, Type 5 Top, 6' OAH	EA		\$	9,000.00	\$	-
12.09	Curb Inlet Complete, F&I - Type J, 5' Diameter Round, Type 6 Top, 6' OAH	EA		\$	9,000.00	\$	-
12.10	Curb Inlet Complete, F&I - Type J, 5' Diameter Round Dog House, Type 9, 6' OAH	EA		\$	11,000.00	\$	-
12.11	Curb Inlet Complete, F&I - Type J, 5' Diameter Round, Type 9, 6' OAH	EA		\$	10,000.00	\$	-
12.12	Ditch Bottom Inlet, F&I -Type D, 5' Square, 4' OAH	EA		\$	6,000.00	\$	-
12.13	USF 5100 Valley Gutter Inlet Frame and 6147 Grate (or Equiv.)	EA		\$	6,500.00	\$	-
12.14	USF 4105 Drop/Gutter Type V, Modified Inlet Frame and 6220 Grate (or Equiv.)	EA		\$	7,000.00	\$	-
12.15	Manhole Complete, F&I - Type P, 4' Dia. Round, Type 8 Top, 6' OAH	EA		\$	9,000.00	\$	-
12.16	Manhole Adjust to Grade Existing	EA		\$	1,750.00	\$	-
12.17	Manhole Top, F&I, City Standard	EA		\$	3,250.00	\$	-
12.18	Pipe Culvert, F&I, RCP, Round, 15"	LF	16	\$	150.00	\$	2,400.00
12.19	Pipe Culvert, F&I, RCP, Round, 18"	LF		\$	175.00	\$	-
12.20	Pipe Culvert, F&I, RCP, Round, 24"	LF		\$	250.00	\$	-
12.21	Pipe Culvert, F&I, RCP, Round, 30"	LF		\$	300.00	\$	-
12.22	Pipe Culvert, F&I, RCP, Round, 36"	LF		\$	350.00	\$	-
12.23	Pipe Culvert, F&I, RCP, Round, 42"	LF		\$	450.00	\$	-
12.24	Pipe Culvert, F&I, RCP, Round, 48"	LF		\$	575.00	\$	-
12.25	Pipe Culvert, F&I, RCPE, Elliptical 19" x 30"	LF		\$	265.00	\$	-
12.26	Pipe Culvert, F&I, RCPE, Elliptical 12" x 18"	LF		\$	195.00	\$	-
12.27	Pipe Culvert, F&I, RCPE, Elliptical 14" x 23"	LF		\$	170.00	\$	-
12.28	Cure-in-Place, Pipe Culvert, F&I, CMP or RCP, Round, 15"	LF		\$	90.00	\$	-
12.29	Cure-in-Place, Pipe Culvert, F&I, CMP or RCP, Round, 18"	LF		\$	100.00	\$	-
12.30	Cure-in-Place, Pipe Culvert, F&I, CMP or RCP, Round, 24"	LF		\$	125.00	\$	-
12.31	Cure-in-Place, Pipe Culvert, F&I, CMP or RCP, Round, 30"	LF		\$	150.00	\$	-
12.32	Cure-in-Place, Pipe Culvert, F&I, CMP or RCP, Round, 36"	LF		\$	225.00	\$	-
12.33	Cure-in-Place, Pipe Culvert, F&I, CMP or RCP, Round, 42"	LF		\$	290.00	\$	-
12.34	Cure-in-Place, Pipe Culvert, F&I, CMP or RCP, Round, 48"	LF		\$	308.00	\$	-
12.35	Mitered End Section Complete, F&I, RCP, Round, 15" Pipe	EA	2	\$	3,000.00	\$	6,000.00
12.36	Mitered End Section Complete, F&I, RCP, Round, 18" Pipe	EA		\$	3,200.00	\$	-
12.37	Mitered End Section Complete, F&I, RCP, Round, 24" Pipe	EA		\$	3,600.00	\$	-
12.38	Mitered End Section Complete, F&I, RCP, Round, 30" Pipe	EA		\$	4,000.00	\$	-
12.39	Mitered End Section Complete, F&I, RCP, Round, 36" Pipe	EA		\$	4,500.00	\$	-
12.40	Mitered End Section Complete, F&I, RCP, Round, 42" Pipe	EA		\$	6,000.00	\$	-
12.41	Mitered End Section Complete, F&I, RCP, Round, 48" Pipe	EA		\$	8,000.00	\$	-
12.42	Concrete Inlet, Ditch Bottom, Type F, <10, w/Grate	EA		\$	5,500.00	\$	-
12.43	Concrete Inlet, Ditch Bottom, Type C, <10, w/Grate	EA		\$	5,000.00	\$	-
12.44	Inlets, Median Barrier, Type 1, <10'	EA		\$	5,500.00	\$	-
12.45	Inlets, Closed Flume	EA		\$	4,400.00	\$	-
12.46	Concrete Pipe Jacket (FDOT Std Plan 430-001)	EA		\$	2,500.00	\$	-

12.47	French Drain, F&I, 15" Pipe, w/Wrapped Stone	LF		\$	225.00	\$	-
12.48	Pipe Repair Clamp SP	EA		\$	7,500.00	\$	-
					Subtotal	\$	8,400.00
13.00 Landscape Enhancements & Site Restorations							
13.01	Performance Turf (Sod)	SY	325	\$	4.00	\$	1,300.00
13.02	Landscape Plants Small Groundcover, 1 Gallon	EA		\$	10.00	\$	-
13.03	Landscape Plants Small Shrub, 1 Gallon	EA		\$	20.00	\$	-
13.04	Landscape Plants Large Shrub, 3 Gallon	EA		\$	35.00	\$	-
13.05	Landscape Plants Large Trees, 65 Gallon	EA		\$	1,100.00	\$	-
13.06	Landscape Plants Large Palms. 12' OAH	EA		\$	950.00	\$	-
13.07	Mailbox Replacement	EA		\$	350.00	\$	-
13.08	Irrigation System (Per Plan)	EA		\$	2,500.00	\$	-
13.09	Irrigation System Repairs	EA		\$	1,750.00	\$	-
13.10	Decorative Street Sign Posts	EA		\$	1,750.00	\$	-
13.11	Single Decorative Post Sign, Relocate Existing	EA		\$	750.00	\$	-
13.12	Irrigation Bores 2" Diameter	EA		\$	3,500.00	\$	-
13.13	Irrigation Bores 4" Diameter	EA		\$	4,500.00	\$	-
13.14	Irrigation Bores 6" Diameter	EA		\$	6,500.00	\$	-
13.15	Aluminum Handrail, Bicycle-Pedestrian, 48" Height Powder Coated 'Black Gloss' (refer to FDOT Index 515-062)	LF		\$	225.00	\$	-
13.16	Aluminum Handrail Repair - Existing	LF		\$	150.00	\$	-
13.17	Steel Handrail Repair - Existing	LF		\$	175.00	\$	-
13.18	Standard Traffic Guardrail-Roadway, General TL-2, 31" Height	LF		\$	45.00	\$	-
13.19	Standard Traffic Guardrail Removal	LF		\$	30.00	\$	-
13.20	Guardrail End Anchorage Assembly-Flared	AS		\$	2,500.00	\$	-
13.21	Guardrail End Anchorage Assembly-Parallel	AS		\$	3,000.00	\$	-
13.22	Standard Traffic Guardrail, Field Painted (Pro.Ind.Alkyd Urethane & Primer)	LF		\$	40.00	\$	-
13.23	Reflectors Barrier Wall or Guardrail Mounted, Yellow	LF		\$	75.00	\$	-
13.24	Fence, Chain Link, Type B, Standard 4'	LF	1,100	\$	45.00	\$	49,500.00
13.25	Fence Gate, Chain Link, Type B, Standard, Single 3' to 6' Opening	EA		\$	1,500.00	\$	-
13.26	Fence Gate, Chain Link, Type B, Standard Double 8' to 12' Opening	EA		\$	4,500.00	\$	-
13.27	Fence, Chain Link, Type B, Standard 6' Black Vinyl Clad	LF		\$	75.00	\$	-
13.28	Fence Gate, Chain Link, Type B, Standard Single 3'to 6' Opening Black Vinyl Clad	EA		\$	1,800.00	\$	-
13.29	Fence Gate, Chain Link, Type B, Stnd. Double 8' to 12' Opening Black Vinyl Clad	EA		\$	5,500.00	\$	-
13.30	Electrical - Project Specific Only	EA		\$	25,000.00	\$	-
13.28	Out of Scope Item (Solar Powered Crosswalk Signs)	EA	2	\$	6,844.00	\$	13,688.00
13.29	Out of Scope Item (Flagmen)	WKS	2	\$	2,400.00	\$	4,800.00
13.30	Out of Scope Item (Pedestrian Delineator every 10 LF))	EA	110	\$	98.00	\$	10,780.00
13.31	Out of Scope Item (2" ARV)	EA		\$	7,500.00	\$	-
13.29	Out of Scope Item (8" Back Flow Preventer)	EA		\$	11,200.00	\$	-
13.31	Out of Scope Item (Not to Exceed 10% of Total Work Order Assignment)	LS				\$	-
					Subtotal	\$	80,068.00
						Total - Base Bid A	\$ 240,780.75
Signature, Company Name, and Date							



Temporary Sidewalk - N. Donnelly Street

Limit Avenue to “Welcome to Mount Dora” Monuments

South End Schematic



Temporary Sidewalk - N. Donnelly Street

Limit Avenue to "Welcome to Mount Dora" Monuments

North End Schematic



30" SOLAR POWERED LED FLASHING PUSH-BUTTON CROSSWALK SIGN

- Our bright LED flashing Crosswalk Sign with push button is part of a solar traffic safety series
- This sign's bright flashing LED lights and reflective 3M material can be seen from over 2500ft and makes for a great addition for safety pertaining to reducing speed ahead
- Made with an aluminum alloy board and solar board to MUTCD (W11-2) specifications
- Sign has a rechargeable battery and mountable solar panel that makes this product energy efficient and easy to use in locations where there is sunlight

INCLUDES:

- SIGN
- SOLAR PANEL
- MOUNTING HARDWARE
- PUSH BUTTON

DOES NOT INCLUDE POLE

PRODUCT APPLICATIONS

Solar Powered Flashing LED Crosswalk Sign with a Push Button is used to allow pedestrians to cross the street in locations where needed with manually activated push button.

PRODUCT SPECIFICATIONS

- TYPE:** Solar Powered LED Traffic Safety Sign
MUTCD: W11-2 Pedestrian Crossing Sign
PRODUCT CODE: CCRS002-30-P
SOLAR CHARGING PANEL: 12V, 5W Monocrystalline silicone
BATTERY: Lithium battery 7.4V/4400AH
WORKING MODE: 12 hours per day or 24 hours per day, flashing or constant lighting optional
WORKING TIME: After one full charge, 5-7 consecutive days
VISIBLE DISTANCE: >2500 feet
IP: 65 (waterproof)
LED COLOR RANGE: Yellow/ Amber
SIGN COLOR: Yellow
- **OPTION:** Fluorescent Yellow/ Green (only in diamond grade)
- BATTERY LIFESPAN:** 3-5 Years
WORKING TEMPERATURE: -20 to 150 degrees Fahrenheit
DIMENSIONS: 24" x 24" Square
- **PACKING DIMENSIONS:** 32" x 32" x 8", 1 Piece
- MUTCD:** W11-2
REFLECTIVE OPTIONS:
- 3M Engineer Grade (Standard)
 - Diamond Grade (Added Cost)



MUTCD SPECIFICATIONS

The CCRS002 model adheres to the MUTCD standards found within MUTCD guidelines Section 2A.07 for Retroreflectivity and Illumination

- Illumination of a sign by Light emitting diodes (LEDs)
- Sign Element to be Illuminated: (1) Symbol or word message (2) Portions of the sign border
- LED's are placed within 1 border unit of border and within words
- LED's are same color as sign background
- LED's are within 1/4" in width
- LED's flashing at a rate of 50 times per minute
- Background of sign is standard 3M reflective engineering grade material

LED LIGHTING SOLUTIONS | 29990 TECHNOLOGY DRIVE, SUITE 5 | MURIETA | CALIFORNIA | 92563 | 760-451-6377









Solar Powered Flashing Push-Button Crosswalk Sign

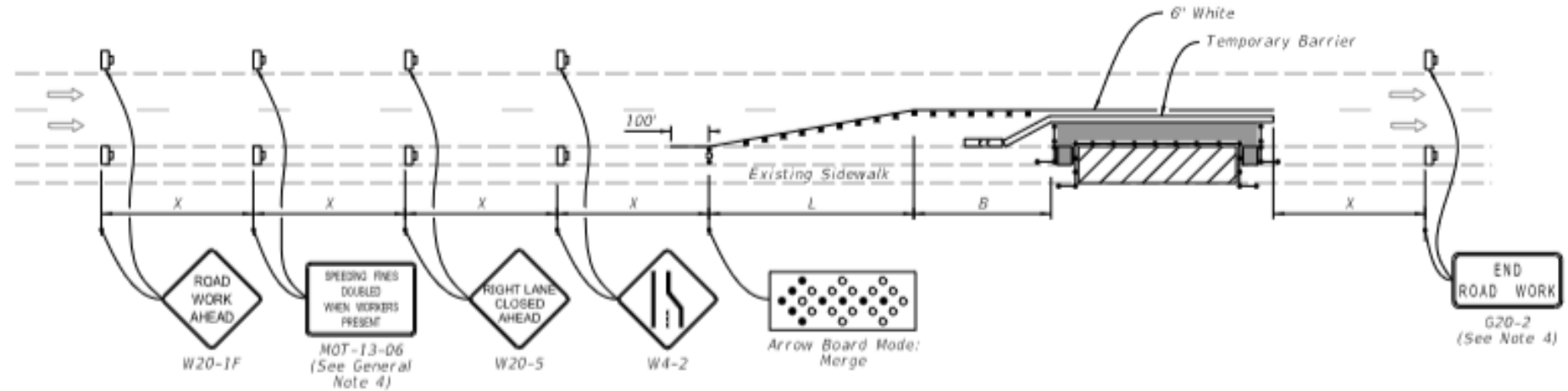
LED Lighting Solutions or Equivalent

NOTES:

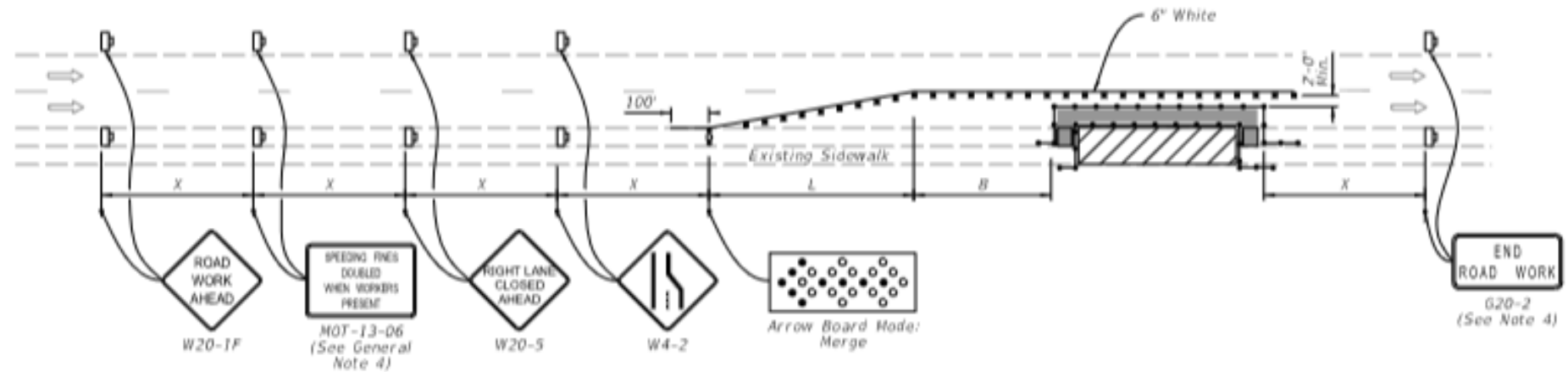
1. L = Taper Length
B = Buffer Length
X = Work Zone Sign Distance
See Index 102-600 for "L", "B", "X", channelizing device spacing values.
2. Provide a 5' wide temporary pedestrian way with a maximum cross-slope of 0.02, except where space restrictions warrant a minimum width of 4'. Provide a 5' x 5' passing space for temporary pedestrian ways less than 5' in width at intervals not to exceed 200'.
3. When temporary pedestrian ways require curb ramps, meet the requirements of Index 522-002. Detectable warnings are not required for curb ramps diverting pedestrian traffic into a closed lane.
4. The "Speeding Fines Doubled When Workers Present" signs (MOT-13-06) and "End Road Work" signs (G20-2), along with associated work zone sign distances, may be omitted when the work operation will be in place for 24 hours or less.
5. Pedestrian Diversion Option 2 may only be used when called for in the Plans or as approved by an Engineer.

SYMBOLS:

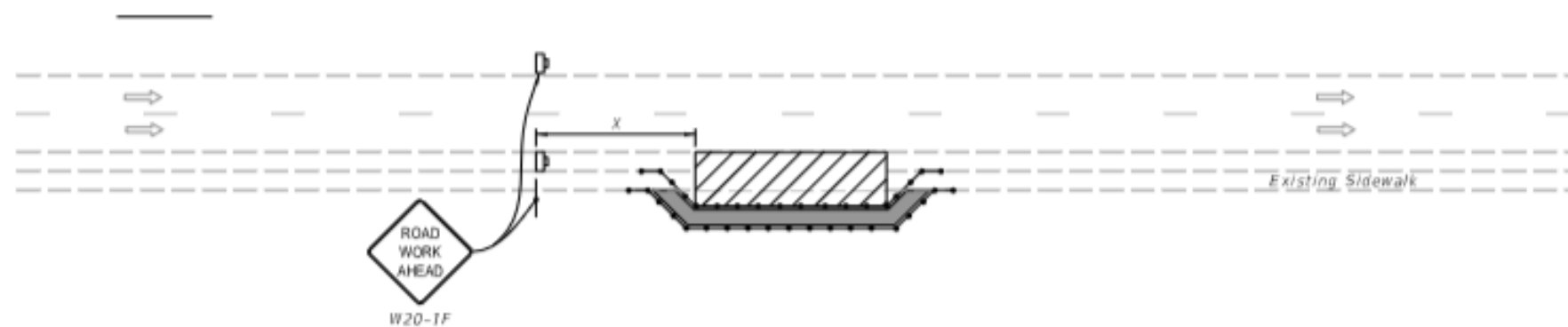
-  Work Area
-  Temporary Pedestrian Way
-  Channelizing Device (See Index 102-600)
-  Pedestrian Longitudinal Channelizing Device (LCD)
-  Work Zone Sign
-  Arrow Board
-  Crash Cushion
-  Lane Identification and Direction of Traffic



PEDESTRIAN DIVERSION - OPTION 1
(Temporary Barrier Shown, Low Profile Barrier Similar)



PEDESTRIAN DIVERSION - OPTION 2
(Work Zone Speed 35 mph or Less)



PEDESTRIAN SPECIAL DETOUR